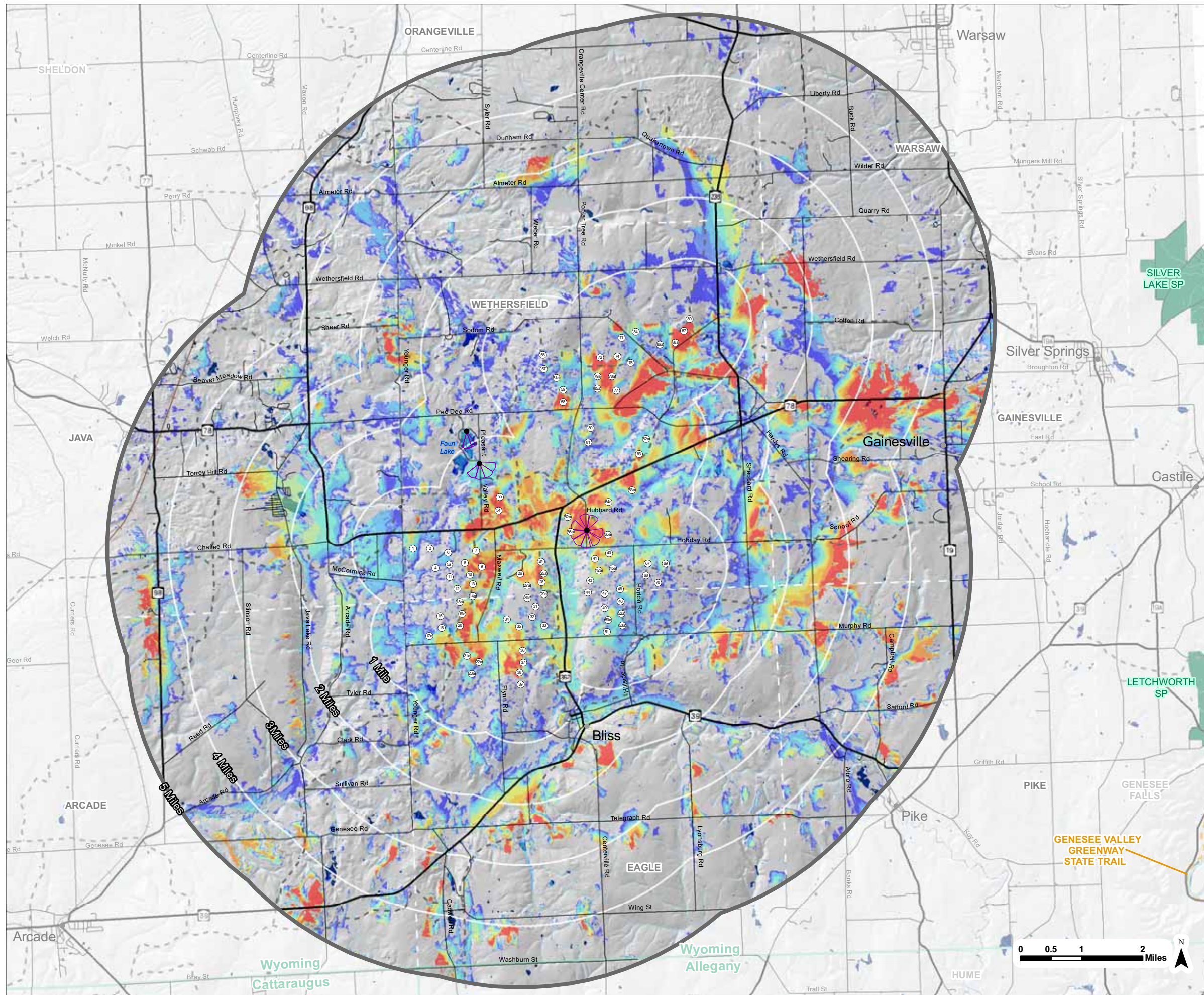


Additional Visual Simulations



NOBLE WETHERSFELD

WINDPARK

Figure S-1
 Proposed Turbine Viewshed -Vegetated*
 And Approximate Photo Angles
 Maximum Turbine Layout 85 WTG
 Layout -Nov. 22, 2006, Rev. 1)

July 2007

KEY

NUMBER OF TURBINES VISIBLE

- 1 - 5
- 6 - 10
- 11 - 20
- 21 - 30
- 31 - 40
- 41 - 50
- 51 - 60
- 61 - 70
- 71 - 85

- PHOTO SIMULATION LOCATION
- WIND TURBINE
- VILLAGE / HAMLET
- HIGHWAY
- LOCAL ROAD
- COUNTY BOUNDARY
- MUNICIPAL BOUNDARY
- SNOWMOBILE TRAIL
- GENESSEE VALLEY GREENWAY STATE TRAIL
- ARCADE AND ATTICA RAILROAD
- NATIONAL REGISTER SITE
- RIVER/STREAM/CREEK
- STATE PARK
- WATERBODY
- △ APPROXIMATE VIEWER ANGLE

*Assumes uniform tree height of 40' (12.192 m) in forested areas.
 PROJECT # 2006 -06108.10M
 Copyright © 2007 Saratoga Associates. All Rights Reserved.
 This map is computer generated using data acquired by Saratoga Associates from various sources and is intended only for reference, conceptual planning and presentation purposes. This map is not intended for and should not be used to establish boundaries, property lines, location of objects or to provide any other information typically needed for construction or any other purpose when engineered plans or land surveys are required.
 File Location: S:\G\06108\Wethersfield\Windfarm_Veg_View_with_Angles\063007.mxd

SARATOGA ASSOCIATES

Landscape Architects, Architects,
 Engineers, and Planners, P.C.
 NEW YORK CITY > SARATOGA SPRINGS

