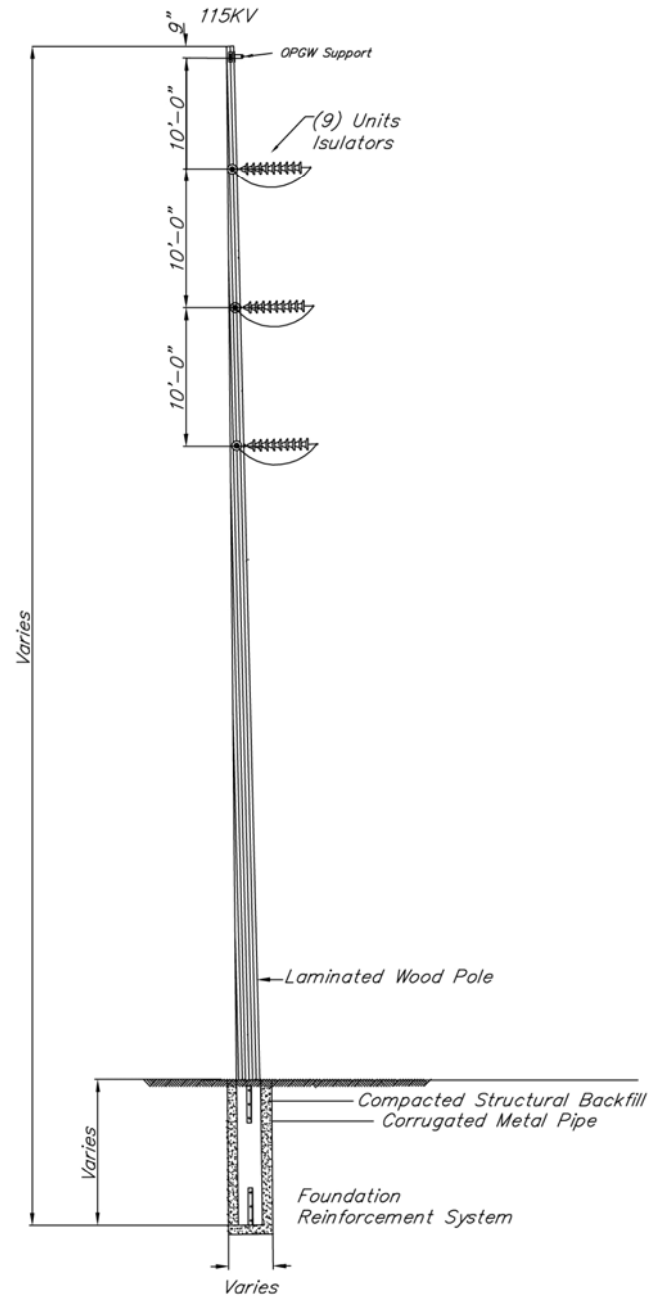
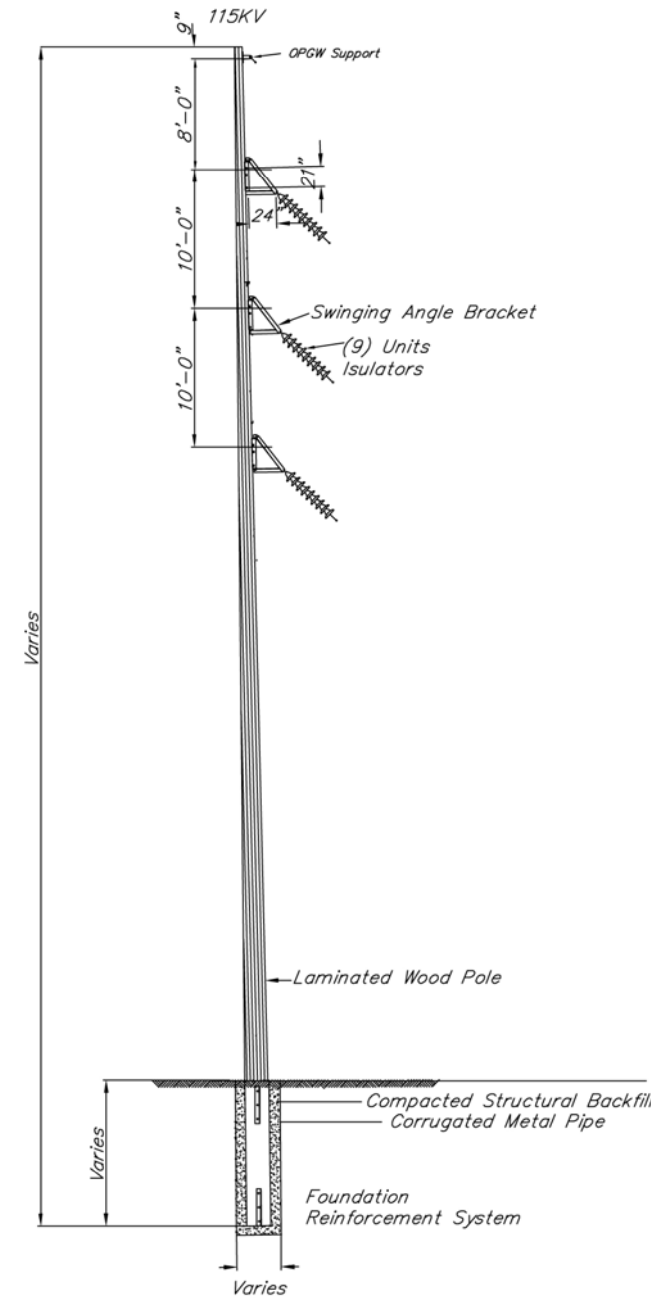


Appendix C

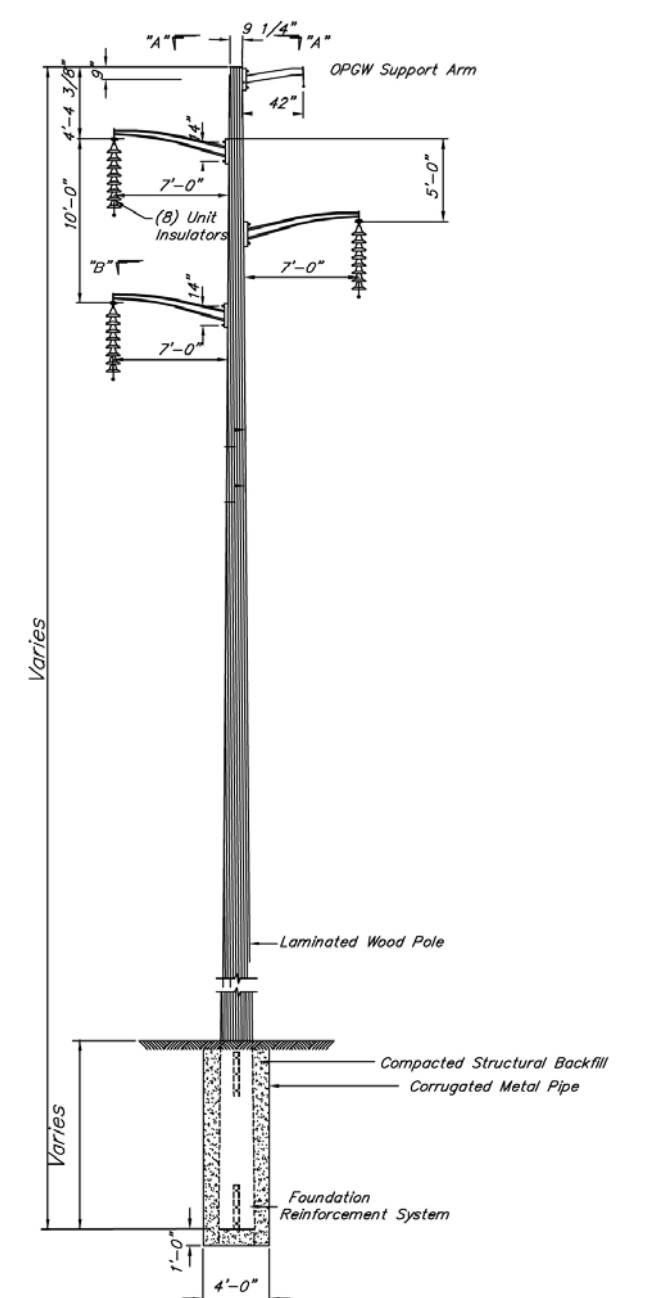
115 kV Transmission Line Details, Viewshed and Photographic Simulations



Typical Deadend Structure (Single Circuit)
Scale: Not to Scale



Typical Angle Structure (Single Circuit)
Scale: Not to Scale

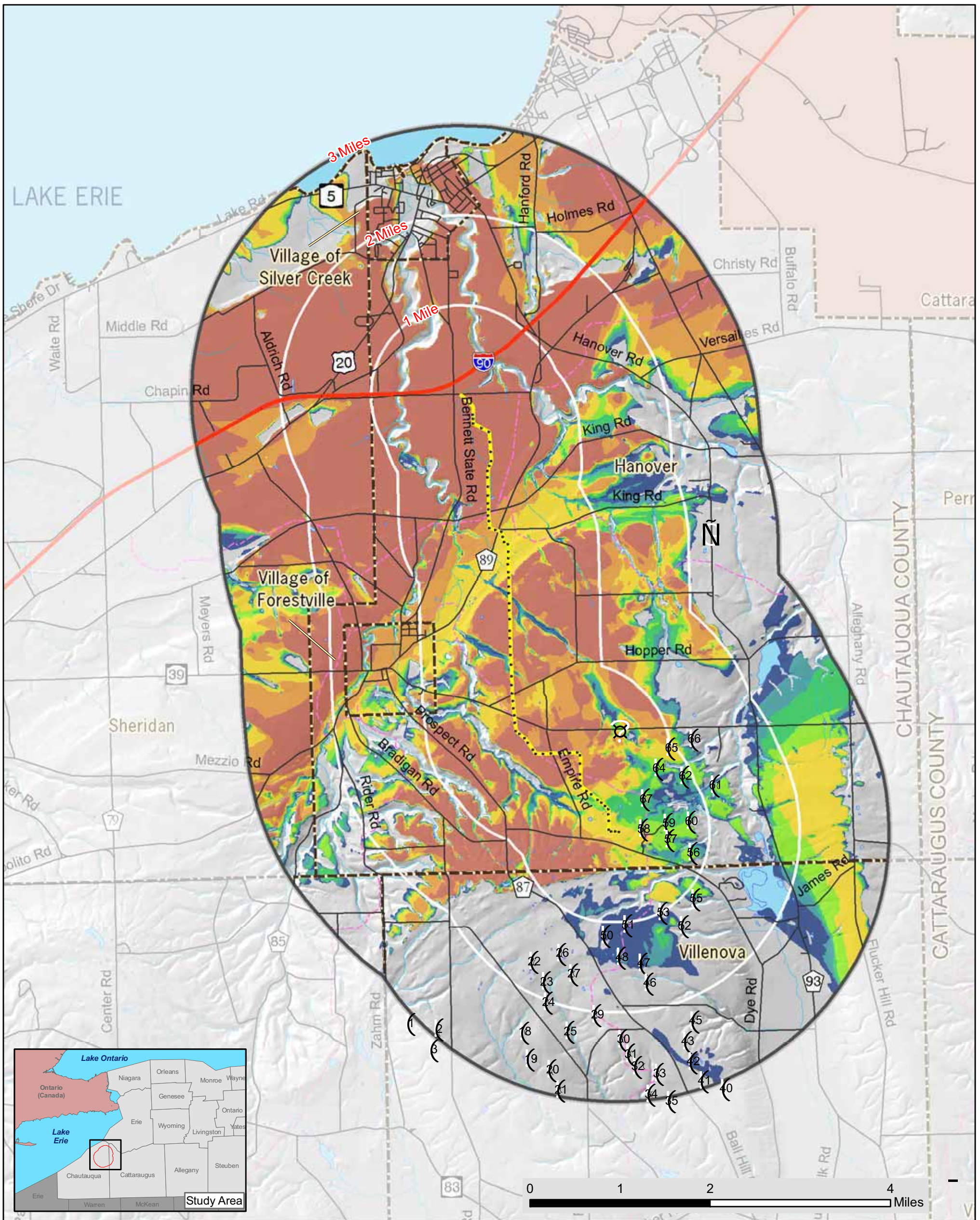


Typical Tangent Structure (Single Circuit)
Scale: Not to Scale

Note: Structure details were provided by Careba Power Engineers, PC.

FIGURE C1

Details of Proposed Transmission Structures
Town of Hanover



**TRANSMISSION LINE
TOPOGRAPHIC VIEWSHED**
Noble Ball Hill Windpark

Figure C2
September 2008

- KEY**
- ① Proposed Wind Turbine
 - Proposed Transmission Structure
 - Proposed Transmission Centerline
 - Snowmobile Trail
 - ▭ Municipal Boundary
 - ▭ County Boundary
 - Water Body

- Number of Structures Visible**
- 1 - 5
 - 6 - 10
 - 11 - 15
 - 16 - 20
 - 21 - 35
 - 36 - 50
 - 51 - 73

PROJECT # 2007 - 07097.10M
Copyright © 2008 Saratoga Associates. All Rights Reserved.

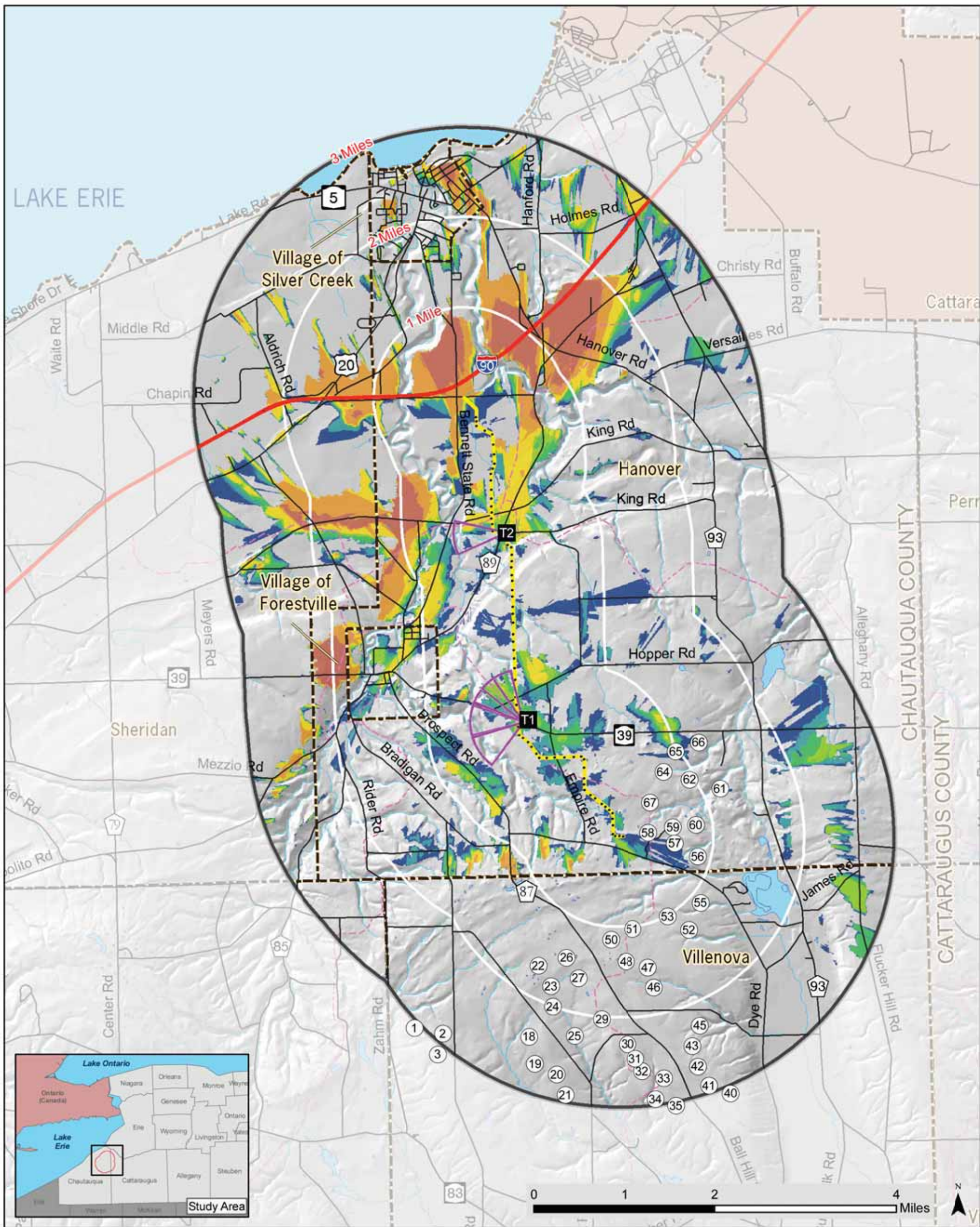
This map is computer generated using data acquired by Saratoga Associates from various sources and is intended only for reference, conceptual planning and presentation purposes. This map is not intended for and should not be used to establish boundaries, property lines, location of objects or to provide any other information typically needed for construction or any other purpose when engineered plans or land surveys are required.

File Location: B:\2007\07097\Tinetopviewshed.mxd

**SARATOGA
ASSOCIATES**

Landscape Architects, Architects,
Engineers, and Planners, P.C.
NEW YORK CITY - SARATOGA SPRINGS

Noble
ENVIRONMENTAL POWER



TRANSMISSION LINE VEGETATED VIEWSHED*

Noble Ball Hill Windpark

*Assumes 40 foot (12.192 m) vegetation height in areas considered forested by the 2001 National Land Cover Dataset

Figure C3
September 2008

KEY

- T1** Viewpoint
- 1** Proposed Wind Turbine
- Proposed Transmission Structure
- Proposed Transmission Centerline
- Snowmobile Trail
- Municipal Boundary
- County Boundary
- Water Body
- Photo Angle

Number of Structures Visible

- 1 - 5
- 6 - 10
- 11 - 15
- 16 - 20
- 21 - 35
- 36 - 50
- 51 - 73

PROJECT # 2007 - 07097.10M

Copyright © 2008 Saratoga Associates. All Rights Reserved.

This map is computer generated using data acquired by Saratoga Associates from various sources and is intended only for reference, conceptual planning and presentation purposes. This map is not intended for and should not be used to establish boundaries, property lines, location of objects or to provide any other information typically needed for construction or any other purpose when engineered plans or land surveys are required.

File Location: B:\200707097\linevegviewshed.mxd

**SARATOGA
ASSOCIATES**

Landscape Architects, Architects,
Engineers, and Planners, P.C.

NEW YORK CITY > SARATOGA SPRINGS

Noble
ENVIRONMENTAL POWER



Existing Condition

FIGURE C4-a



Photo Simulation
VP#T1—NYS Route 39
Town of Hanover
Approximately 360 feet from the nearest transmission structure



Photo Simulation

FIGURE C4-b



Photo Simulation
VP#T1—NYS Route 39
Town of Hanover

Approximately 360 feet from the nearest transmission structure



Existing Condition

FIGURE C4-c



Photo Simulation
VP#T1—NYS Route 39
Town of Hanover
Approximately 360 feet from the nearest transmission structure



Photo Simulation

FIGURE C4-d



Photo Simulation
VP#T1—NYS Route 39
Town of Hanover
Approximately 360 feet from the nearest transmission structure



Existing Condition

FIGURE C4-e



Photo Simulation
VP#T1—NYS Route 39
Town of Hanover

Approximately 360 feet from the nearest transmission structure



Photo Simulation



FIGURE C4-f

Photo Simulation
VP#T1—NYS Route 39
Town of Hanover

Approximately 360 feet from the nearest transmission structure



Existing Condition

FIGURE C4-g



Photo Simulation
VP#T1—NYS Route 39
Town of Hanover

Approximately 360 feet from the nearest transmission structure



Photo Simulation

FIGURE C4-h



Photo Simulation
VP#T1—NYS Route 39
Town of Hanover

Approximately 360 feet from the nearest transmission structure



Existing Condition



Photo Simulation

FIGURE C4-i

Photo Simulation
VP#T1—NYS Route 39
Town of Hanover
Approximately 360 feet from the nearest transmission structure



Existing Condition

FIGURE C5-a



Photo Simulation
VP#T2—King Road
Town of Hanover

Approximately 180 feet from the nearest transmission structure



Photo Simulation

FIGURE C5-b



Photo Simulation
VP#T2—King Road
Town of Hanover

Approximately 180 feet from the nearest transmission structure

