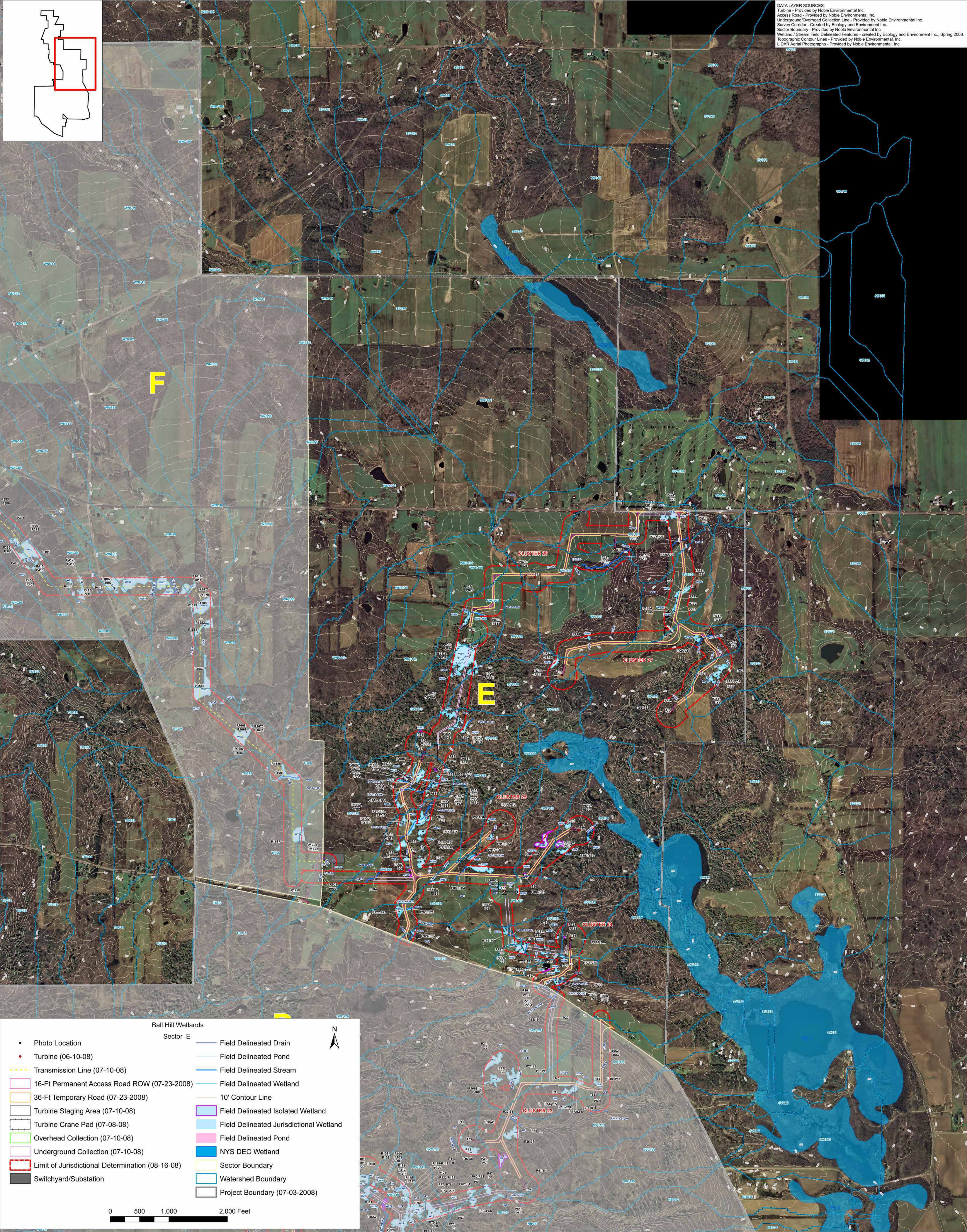


DATA LAYER SOURCES:  
 Turbine - Provided by Noble Environmental Inc.  
 Access Road - Provided by Noble Environmental Inc.  
 Underground/Overhead Collection Line - Provided by Noble Environmental Inc.  
 Survey Contour - Created by Ecology and Environment Inc.  
 Sector Boundary - Provided by Noble Environmental Inc.  
 Wetland / Stream Field Delineated Features - Created by Ecology and Environment Inc., Spring 2008.  
 Topographic Contour Lines - Provided by Noble Environmental, Inc.  
 LIDAR Aerial Photographs - Provided by Noble Environmental, Inc.



**Ball Hill Wetlands**  
 Sector E

• Photo Location	Field Delineated Drain
• Turbine (06-10-08)	Field Delineated Pond
--- Transmission Line (07-10-08)	Field Delineated Stream
--- 16-Ft Permanent Access Road ROW (07-23-2008)	Field Delineated Wetland
--- 36-Ft Temporary Road (07-23-2008)	10' Contour Line
▭ Turbine Staging Area (07-10-08)	Field Delineated Isolated Wetland
▭ Turbine Crane Pad (07-08-08)	Field Delineated Jurisdictional Wetland
▭ Overhead Collection (07-10-08)	Field Delineated Pond
▭ Underground Collection (07-10-08)	NYS DEC Wetland
▭ Limit of Jurisdictional Determination (08-16-08)	Sector Boundary
▭ Switchyard/Substation	Watershed Boundary
	Project Boundary (07-03-2008)

0 500 1,000 2,000 Feet